

15 08159 05 00 0013



RUA 15 DE NOVEMBRO

RUA PEDRO ALVARES CABRAL

RUA 13 DE MAIO

RUA NOVA

RUA DEODORO DA FONSECA

RUA TANCREDO NEVES

RUA PRESIDENTE VARGAS

RUA DEODORO DA FONSECA

RUA NOVA

RUA TANCREDO NEVES

RUA PRESIDENTE VARGAS

RUA JUSCELINO KUBSTCHEK

AVENIDA ANTONIO ALFREDO BATISTON

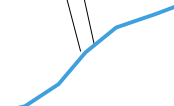
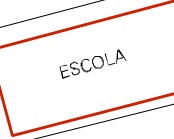
AVENIDA ANGELO DEBIASI

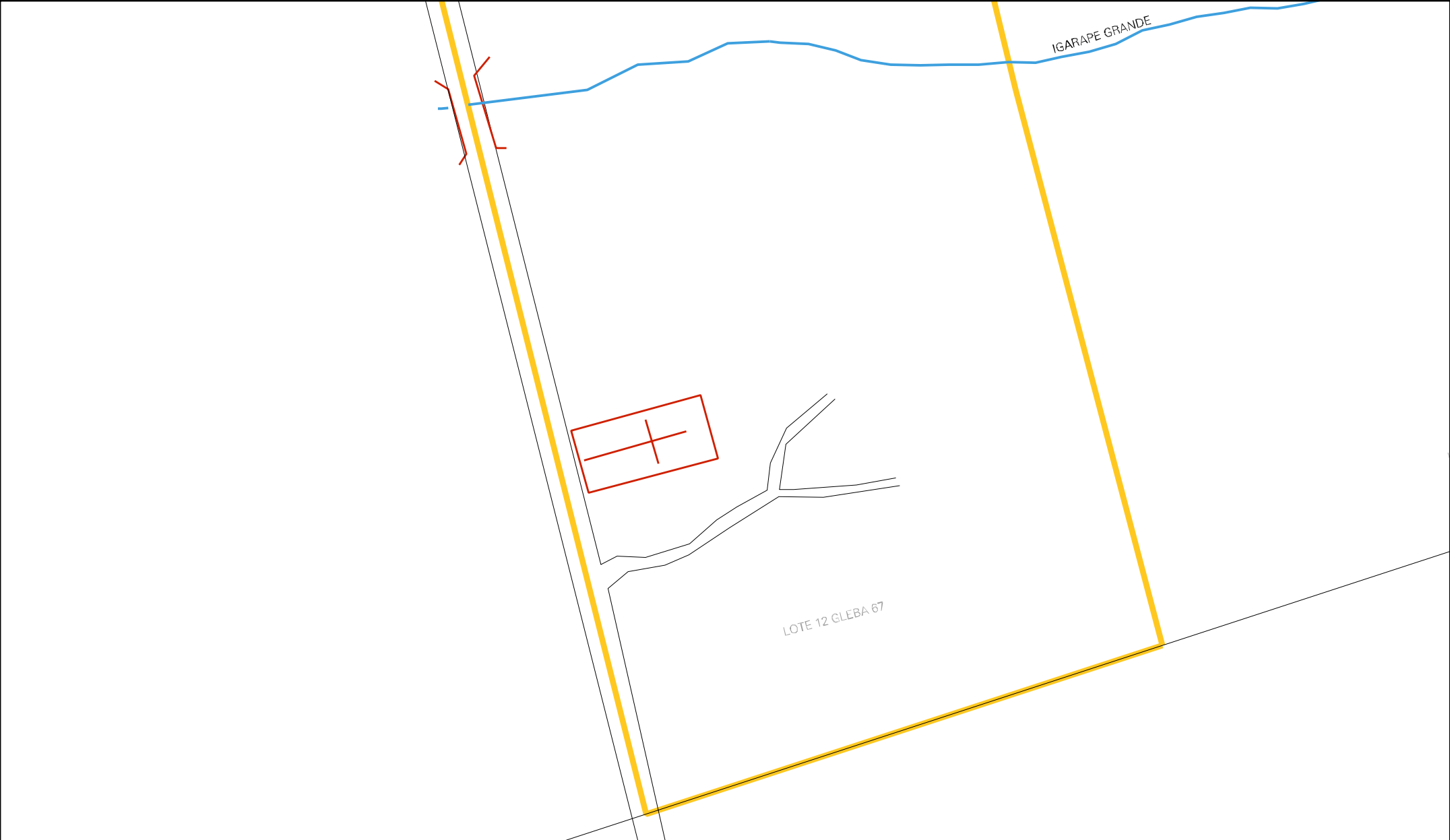
AVENIDA CENTRAL

IGREJA

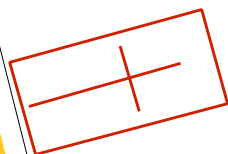
ESCOLA

OLARIA ABANDONADA





IGARAPE GRANDE



LOTE 12 GLEBA 67



MUNICIPIO: 08159 - URUARÁ  
DISTRITO: 05 - URUARÁ  
SUBDISTRITO: 00  
SETOR: 0013 SITUACAO: 10

ESTADO DO PARA  
MAPA DE SETOR URBANO - MSU  
ESCALA: 1 : 3888

