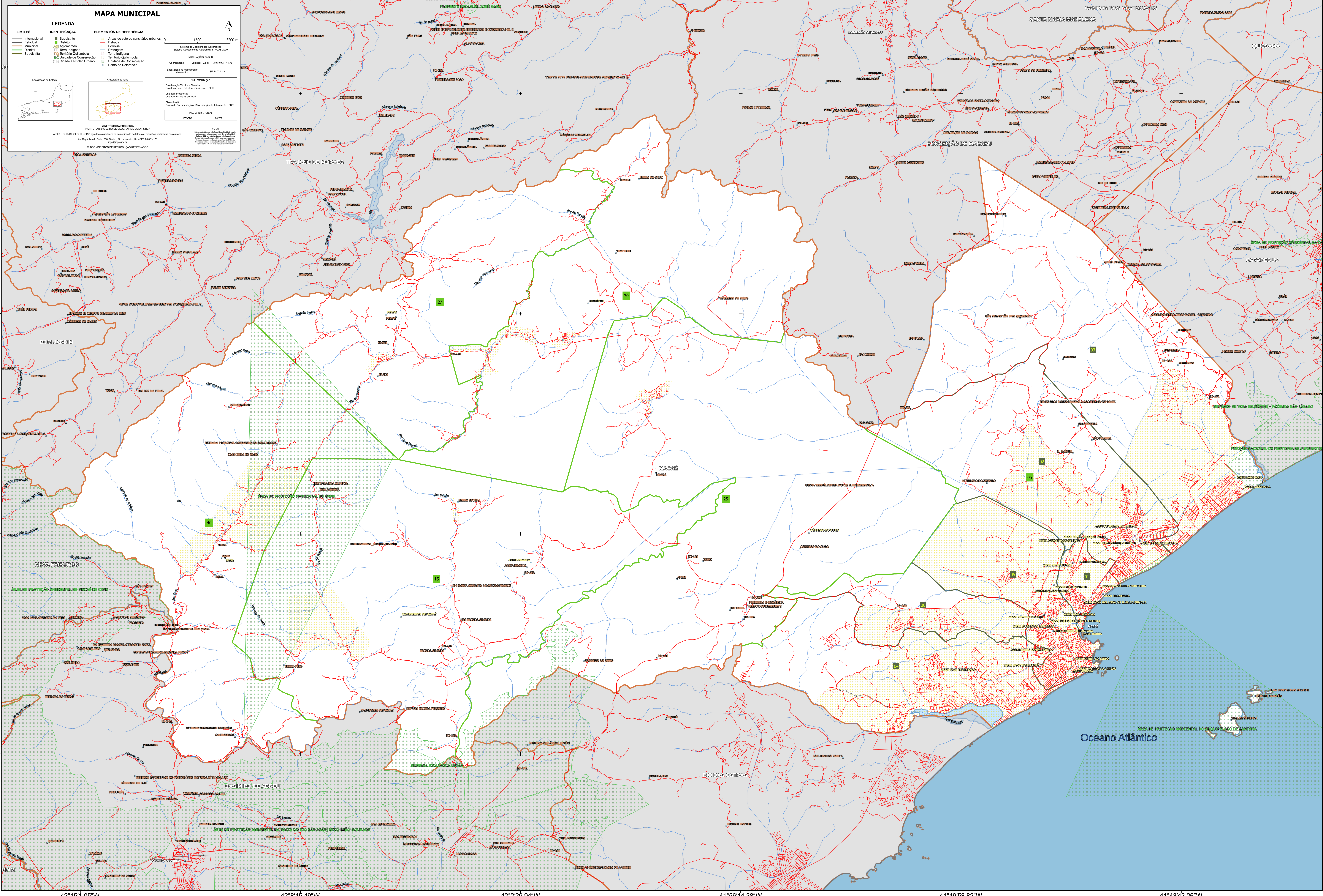


42°15'1.05"W      42°8'45.49"W      42°2'29.94"W      41°56'14.38"W      41°49'58.82"W      41°43'43.26"W



22°19'29.45"S

22°25'45.00"S

22°13'13.89"S

22°6'58.33"S

42°15'1.05"W

42°8'45.49"W

42°2'29.94"W

41°56'14.38"W

41°49'58.82"W

41°43'43.26"W

Oceano Atlântico

22°25'45.00"S