

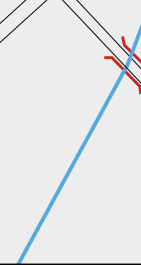
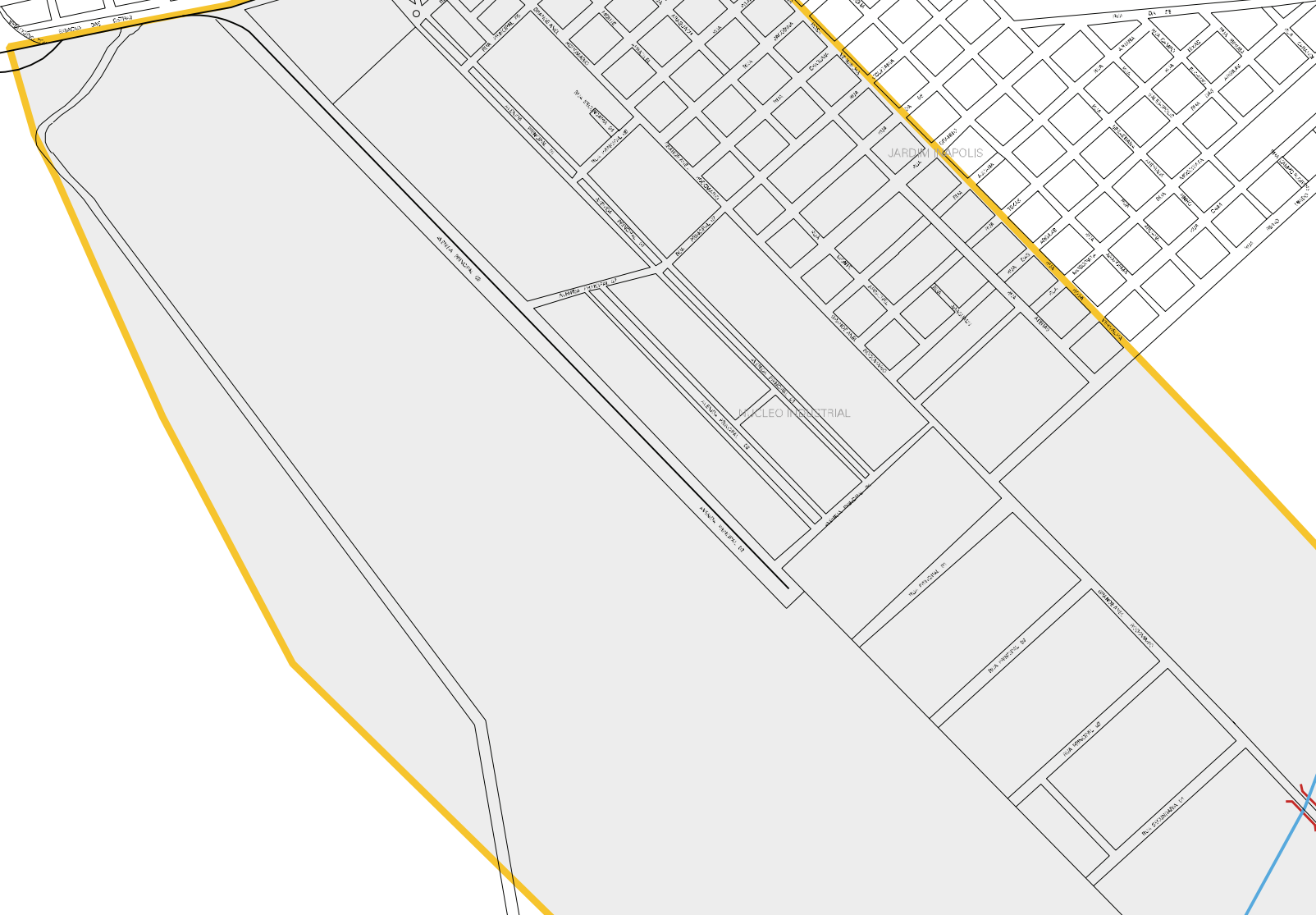
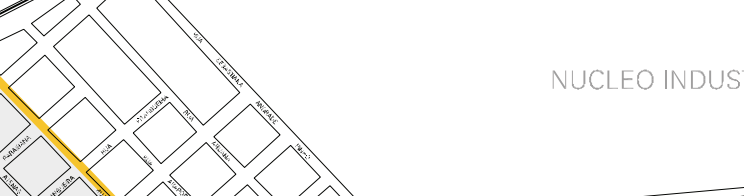
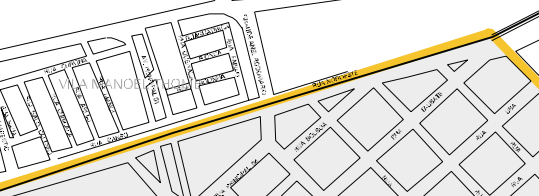
VILA TRONCA ALTO

VILA MANOEL

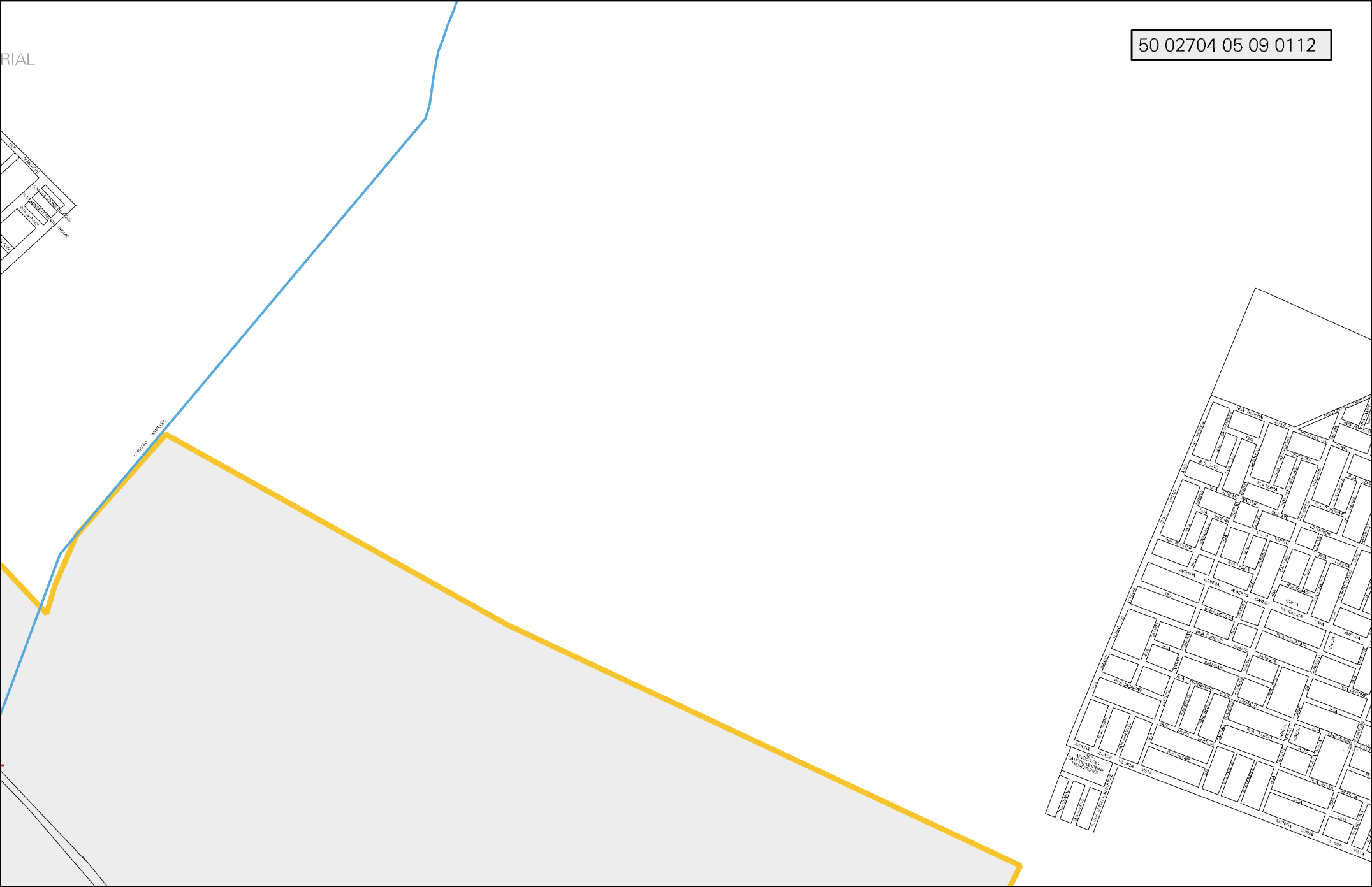
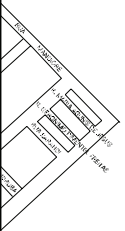
NUCLEO INDUSTRIAL

JARDIM OPOLIS

NUCLEO INDUSTRIAL



RIAL





MUNICIPIO: 02704 - CAMPO GRANDE  
DISTRITO: 05 - CAMPO GRANDE  
SUBDISTRITO: 09 - REGIÃO URBANA DO IMBIRUSSÚ  
SETOR: 0112 SITUACAO: 10  
BAIRRO: 057 - NÚCLEO INDUSTRIAL

