




Mapas 61 a 64 - Tipologia intraurbana das Concentrações Urbanas de "Cuiabá/MT", Anápolis (GO), Campo Grande (MS) e "Goiânia/GO"


LIMITES MUNICIPAIS

 Na concentração urbana


 Fora da concentração urbana


SISTEMA VIÁRIO


 Rodovia

 Ferrovia





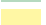






HIDROGRAFIA

 Terreno sujeito à inundação

 Corpo d'água

 Curso d'água

TIPOLOGIA INTRAURBANA

	A
	B
	C
	D
	E
	F
	G
	H
	I
	J
	K

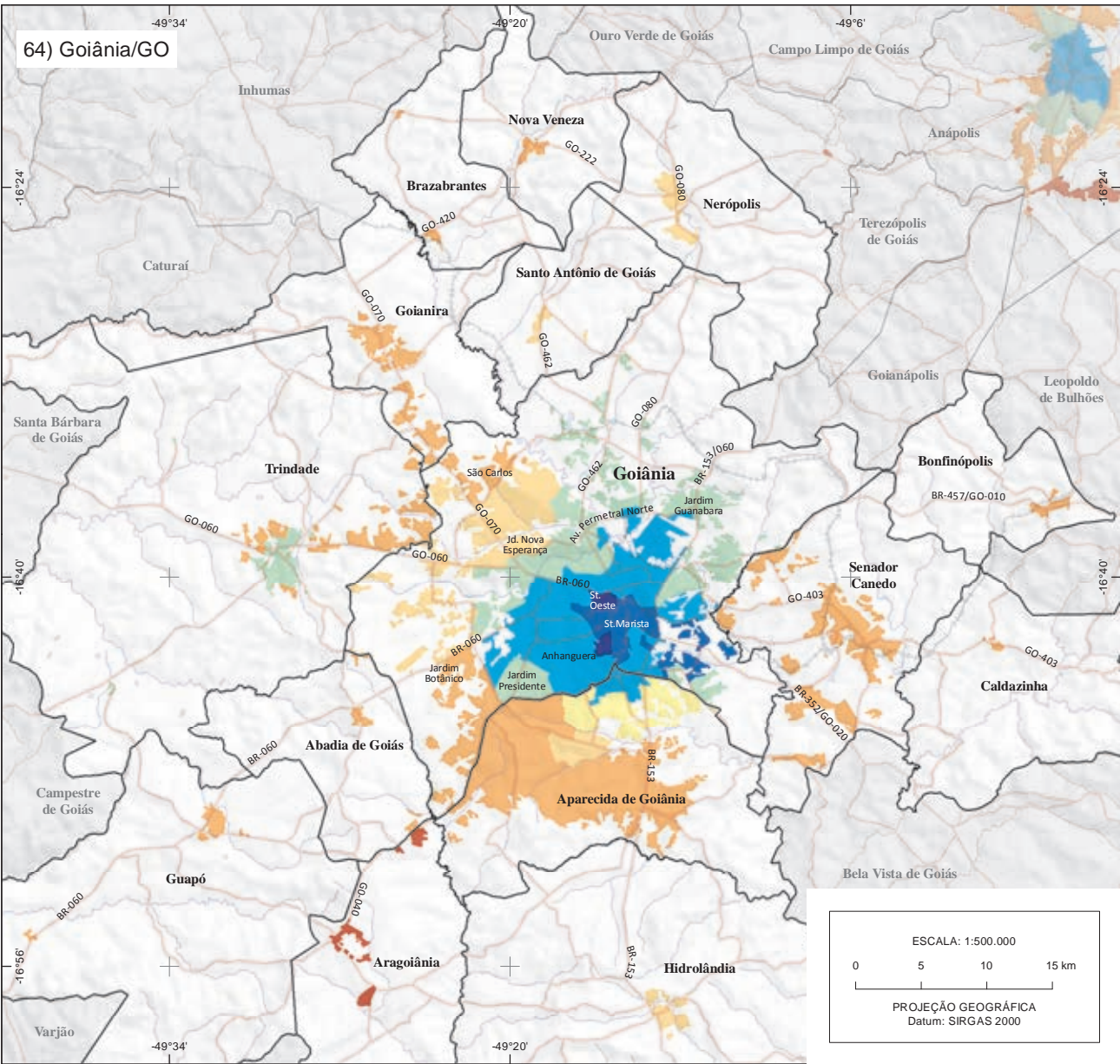
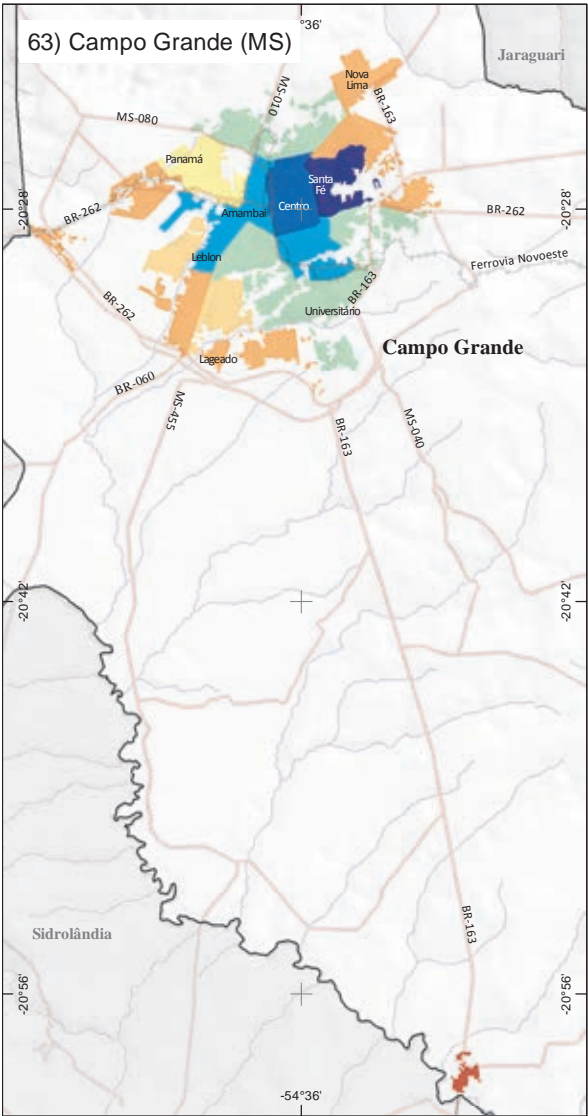
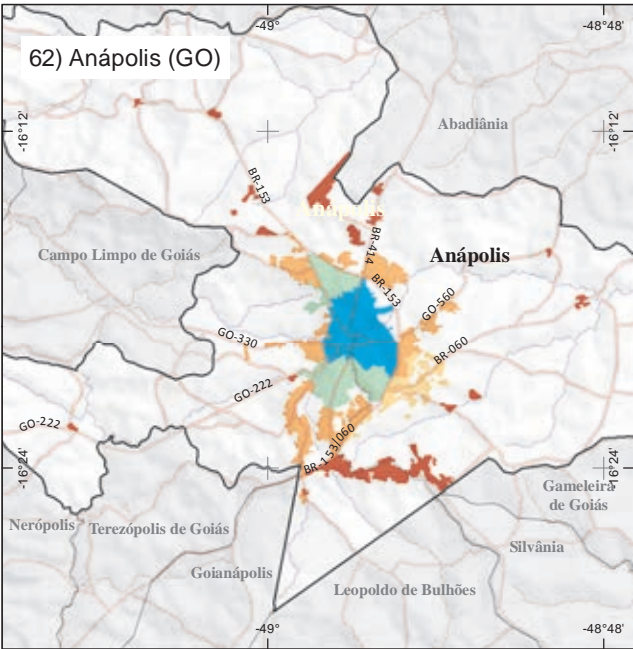
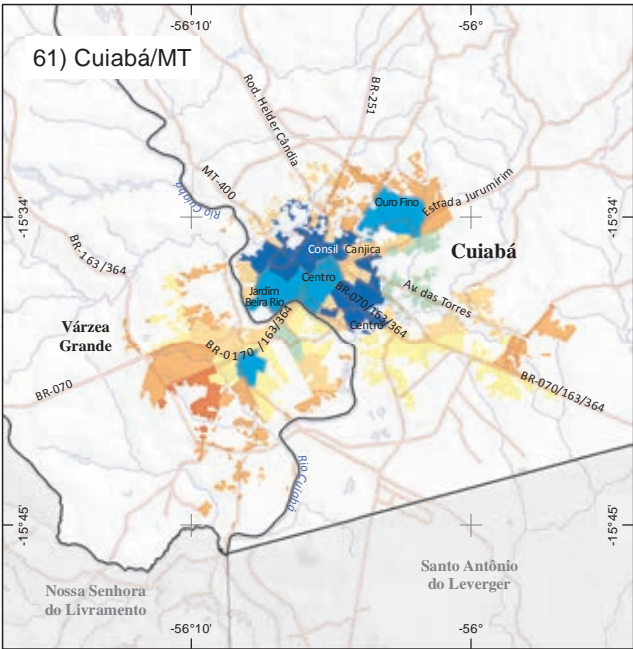
MELHORES

↑

CONDIÇÕES DE VIDA

↓

PIORES



ESCALA: 1:500.000

0

5

10

15 km

PROJEÇÃO GEOGRÁFICA

Datum: SIRGAS 2000

Fontes: 1. IBGE, Diretoria de Geociências, Coordenação de Geografia e Coordenação de Cartografia. 2. IBGE, Censo Demográfico 2010.

Notas: 1. Consideram-se Concentrações Urbanas os arranjos populacionais e os municípios isolados com mais de 100 000 habitantes. Os municípios isolados são aqueles que não fazem parte de arranjos populacionais.

2. A tipologia intraurbana refere-se somente às Áreas de Ponderação com mais de 40% de domicílios em situação urbana.